

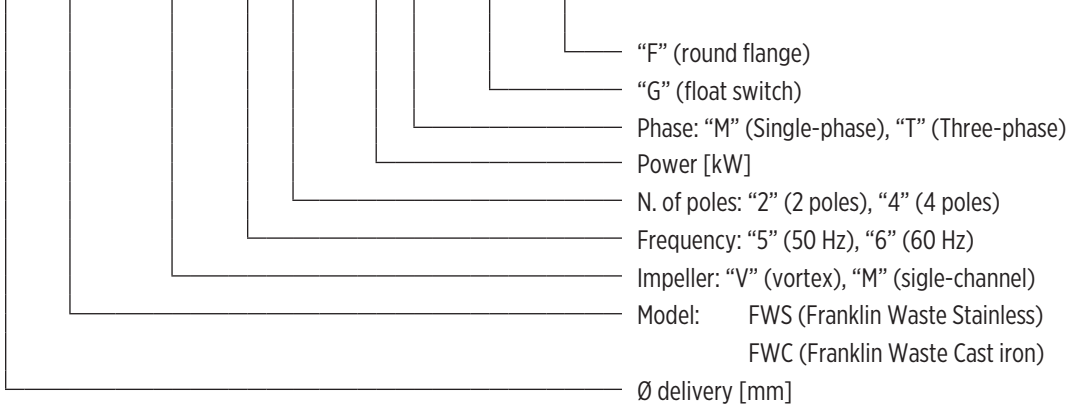
FWS-FWC Series - Wastewater lift pumps 50 Hz



FWS-FWC SERIES - WASTEWATER LIFT PUMPS 50 HZ

PUMP IDENTIFICATION CODE

50 FW... - V - 5 2 - 1,8 T - G - F



0014086 09/2023

32FWS V SERIES 50 HZ

FEATURES & BENEFITS

APPLICATIONS



Pumping of clear non-loaded fluids



Extraction of water from ponds, streams or pits and for rainwater collection



Wastewater

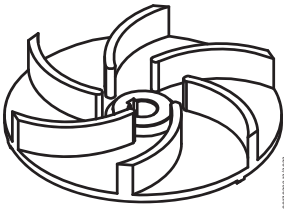


MARKETS



STAINLESS STEEL AND CAST IRON SUBMERSIBLE WASTEWATER LIFT PUMPS

Submersible electric pump particularly suitable for the emptying of basements, garages, cellars and flooded premises.



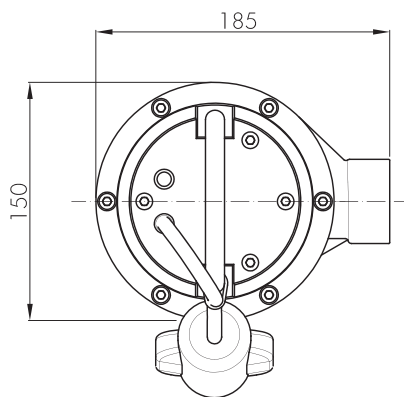
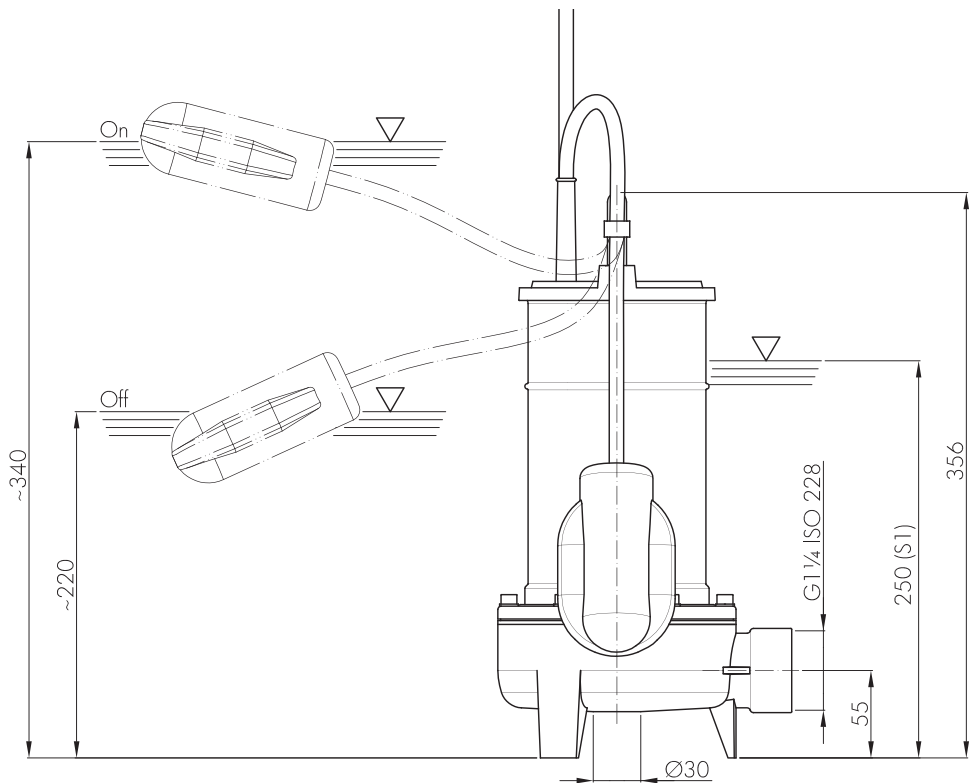
VORTEX IMPELLER

GENERAL FEATURES

		Materials/Constr.design
Vortex impeller		Cast iron EN GJL200
External casing		Stainless steel AISI304
Pump body		Cast iron EN GJL200
Cover		Cast iron EN GJL200
Mechanical seal	motor side	Seal ring
	pump side	Graphite/Alumina
Motor shaft		Stainless steel AISI416
Power cable		10 m H07RN-F type, 3G1 mm ² and SCHUKO plug
Motor		
Constr.design		asynchronous squirrel cage-type oil filled
Type		2 poles; 50 Hz
Insulation class		F
Protection degree		IP68
Voltage	Single-phase	230V ±6% built-in overheating protection, built in capacitor, float switch as optional
Limits of use		
Maximum liquid temperature		+40 °C
pH of pumped liquid		6 - 10
Liquid density		1,0 kg/dm ³
Maximum immersion depth:		5 m
Min. immersion depth for continuous service		250 mm
Free passage		30 mm
Max. number of starting/hour		20
Construction options		

- 60 Hz version
- Different voltages
- Food-grade white oil

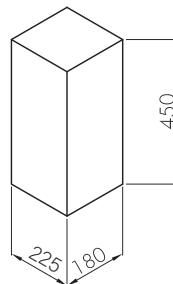
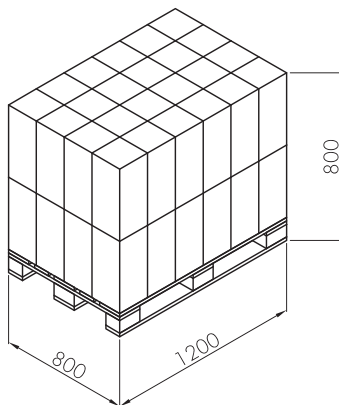
DIMENSIONAL DRAWINGS



00130276 12/2022

Packaging		
Pump model	Dimensions [mm]	Weight [kg]
32 FWS V	225x180x450	11,5

Pallet		
Dimensions [mm]	N° of pumps	Weight [kg]
1200x800x800	32	400



00130288 02/2023

TECHNICAL DATA

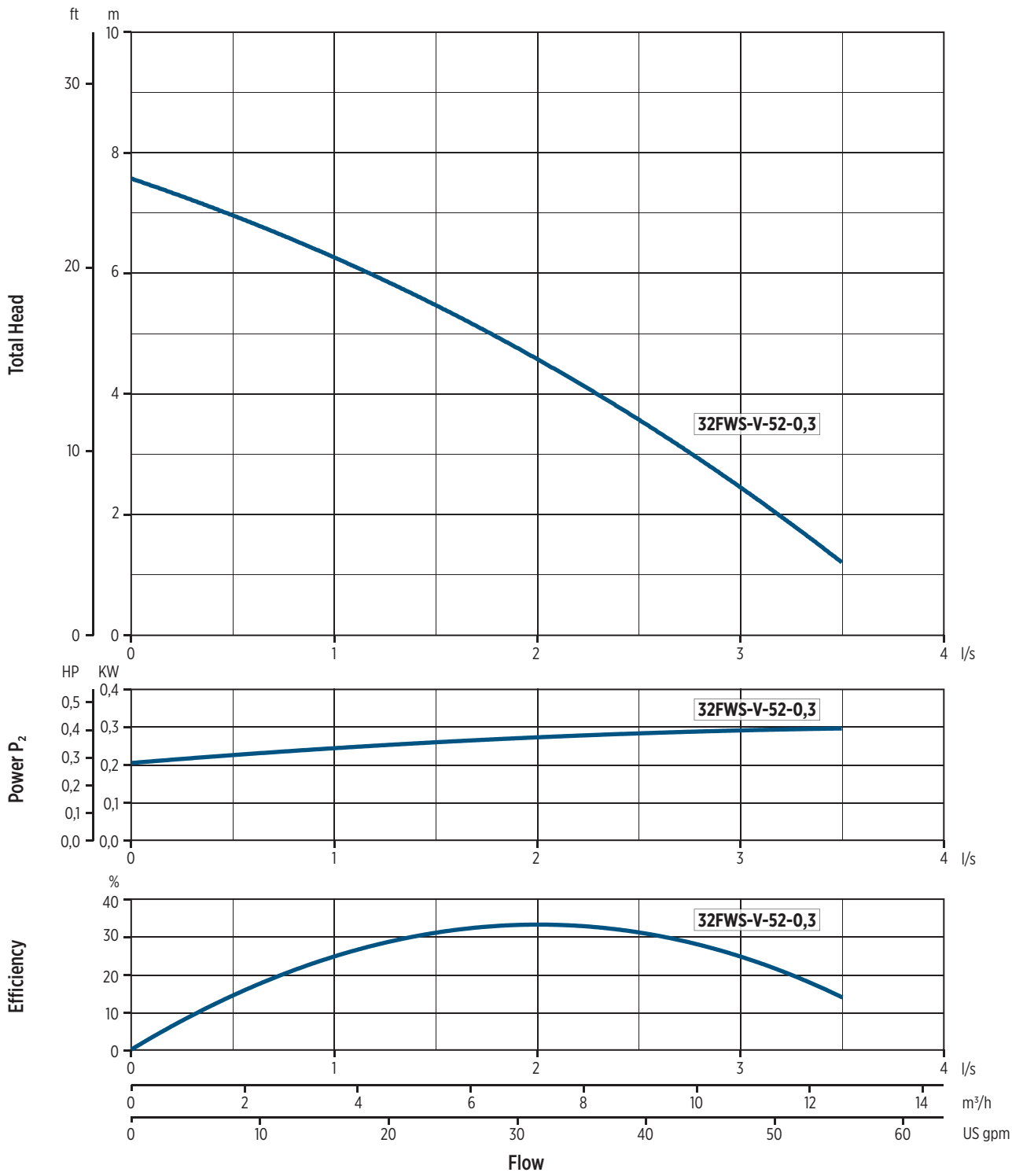
Pump model	Motor absorbed power P ₁	Rated power P ₂		Voltage	Rated current	Phase	Power cable		float switch	Running capacitor	Delivery port	Weight [kg]
	[kW]	[kW]	[HP]	[V]	[A]		length [m]	Type		[μf]		
32FWS-V-52-0,3M	0,57	0,3	0,4	230	2,8	1~	10	3G1	-	8	G1¼	11
32FWS-V-52-0,3M-G	0,57	0,3	0,4	230	2,8	1~	10	3G1	•	8	G1¼	11

"-" = not available • = available

HYDRAULIC PERFORMANCE AT 50 HZ

Pump model	Phase	Q = Delivery							
		l/sec 0	0,5	1	1,5	2	2,5	3	3,5
		m ³ /h 0	1,8	3,6	5,4	7,2	9	10,8	12,6
		US gpm 0	7,9	15,8	23,7	31,7	39,6	47,5	55,5
		H = Total meters head of water column [m]							
32FWS-V-52-0,3	1~	7,6	6,9	6,3	5,5	4,6	3,5	2,5	1,2

PERFORMANCE CURVES AT 50 HZ



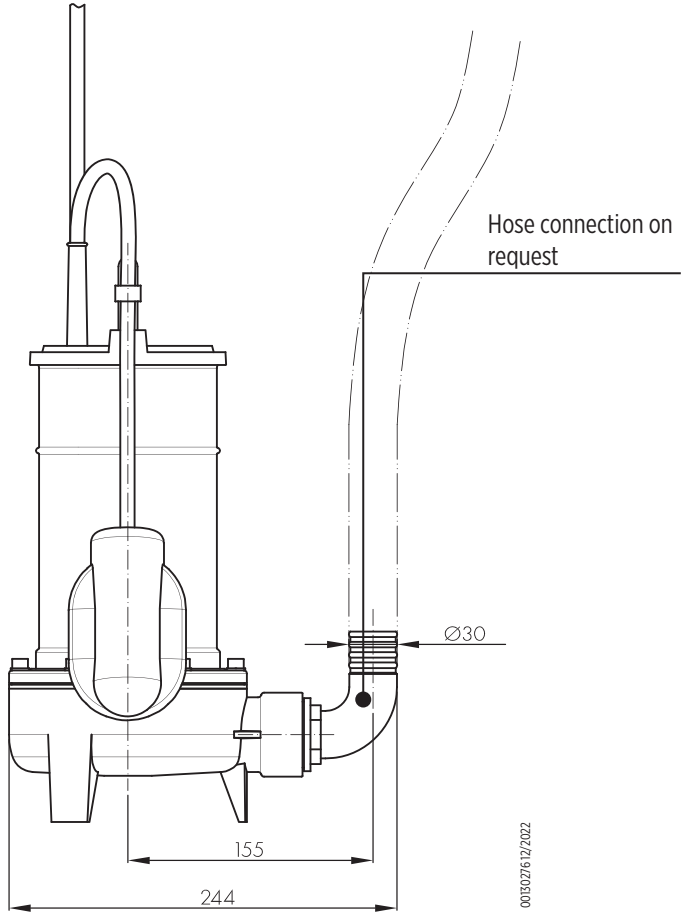
0020092.12/2022

INSTALLATION

INSTALLATION INSTRUCTIONS

TRANSPORTABLE INSTALLATION

Transportable as emergency pump with connection to the hose and for free installation in the well.



00130276/12/2022

40FWS V SERIES 50 HZ

FEATURES & BENEFITS

APPLICATIONS



Pumping of clear non-loaded fluids



Extraction of water from ponds, streams or pits and for rainwater collection



Wastewater

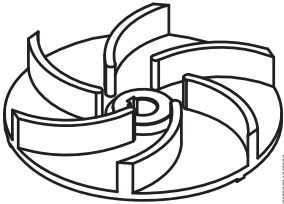


MARKETS



STAINLESS STEEL AND CAST IRON SUBMERSIBLE WASTEWATER LIFT PUMPS

Submersible electric pump particularly suitable for the emptying of basements, garages, cellars and flooded premises.



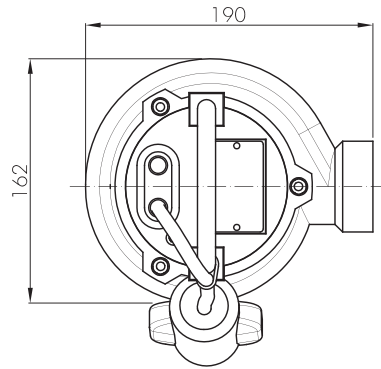
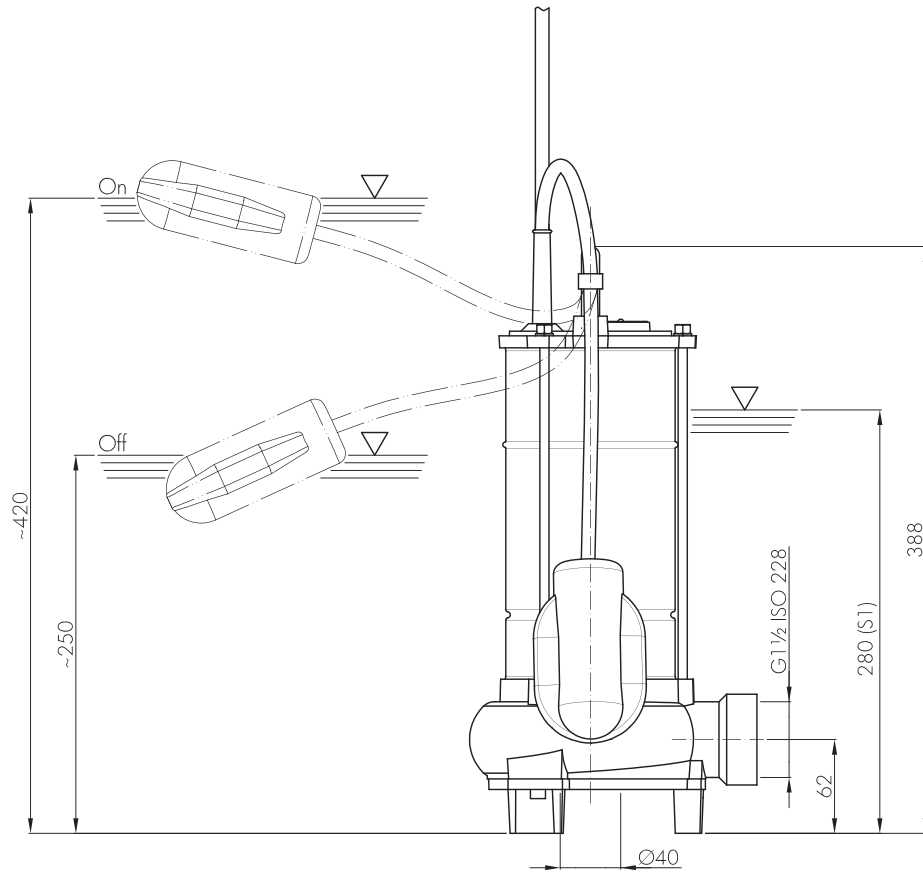
VORTEX IMPELLER

GENERAL FEATURES

		Materials/Constr.design
Vortex impeller		Cast iron EN GJL200
External casing		Stainless steel AISI304
Pump body		Cast iron EN GJL200
Cover		Cast iron EN GJL200
Mechanical seal	motor side	Seal ring
	pump side	Graphite/Alumina
Motor shaft		Stainless steel AISI416
Power cable	Type	10 m H07RN-F type
	Single-phase	3G1mm ² with SCHUKO plug (CEE 7/VII)
	Three-phase	4G1 mm ²
		Motor
Constr.design		asynchronous squirrel cage-type oil filled
Type		2 poles; 50 Hz
Insulation class		F
Protection degree		IP68
Voltage	Single-phase	230 V ±6% built-in overheating protection, built in capacitor, float switch as optional
	Three-phase	230V ±10%, 400V ±10%
		Limits of use
Maximum liquid temperature		+40 °C
pH of pumped liquid		6 - 10
Liquid density		1,0 kg/dm ³
Maximum immersion depth:		5 m
Min. immersion depth for continuous service		280 mm
Free passage		20 mm
Max. number of starting/hour		20
		Construction options

- 60 Hz version
- Different voltages
- Food-grade white oil
- Silicon carbide (SiC/SiC) mechanical seal

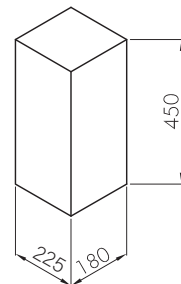
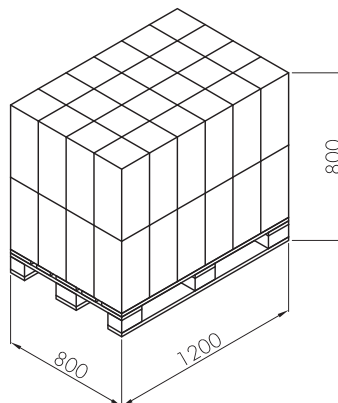
DIMENSIONAL DRAWINGS



00502712/2022

Packaging		
Pump model	Dimensions [mm]	Weight [kg]
40 FWS V	225x180x450	13,5

Pallet		
Dimensions [mm]	N° of pumps	Weight [kg]
1200x800x800	32	460



00130288 02/2023

TECHNICAL DATA

Pump model	Motor absorbed power P ₁	Rated power P ₂		Voltage [V]	Rated current [A]	Phase	Power cable		float switch	Running capacitor [μf]	Delivery port	Weight [kg]
	[kW]	[kW]	[HP]				length [m]	Type				
40FWS-V-52-0,37M	0,58	0,37	0,5	230	3	1 ~	10	3G1	-	8	G1½	13
40FWS-V-52-0,37M-G	0,58	0,37	0,5	230	3	1 ~	10	3G1	•	8	G1½	13
40FWS-V-52-0,6M	0,72	0,6	0,8	230	3,7	1 ~	10	3G1	-	10	G1½	13
40FWS-V-52-0,6M-G	0,72	0,6	0,8	230	3,7	1 ~	10	3G1	•	10	G1½	13
40FWS-V-52-0,7M	0,88	0,7	0,95	230	4,8	1 ~	10	3G1	-	14	G1½	14
40FWS-V-52-0,7M-G	0,88	0,7	0,95	230	4,8	1 ~	10	3G1	•	14	G1½	14
40FWS-V-52-0,7T	0,88	0,7	0,95	400	1,8	3 ~	10	4G1	-	-	G1½	14
40FWS-V-52-0,7T-G	0,88	0,7	0,95	400	1,8	3 ~	10	4G1	•	-	G1½	14

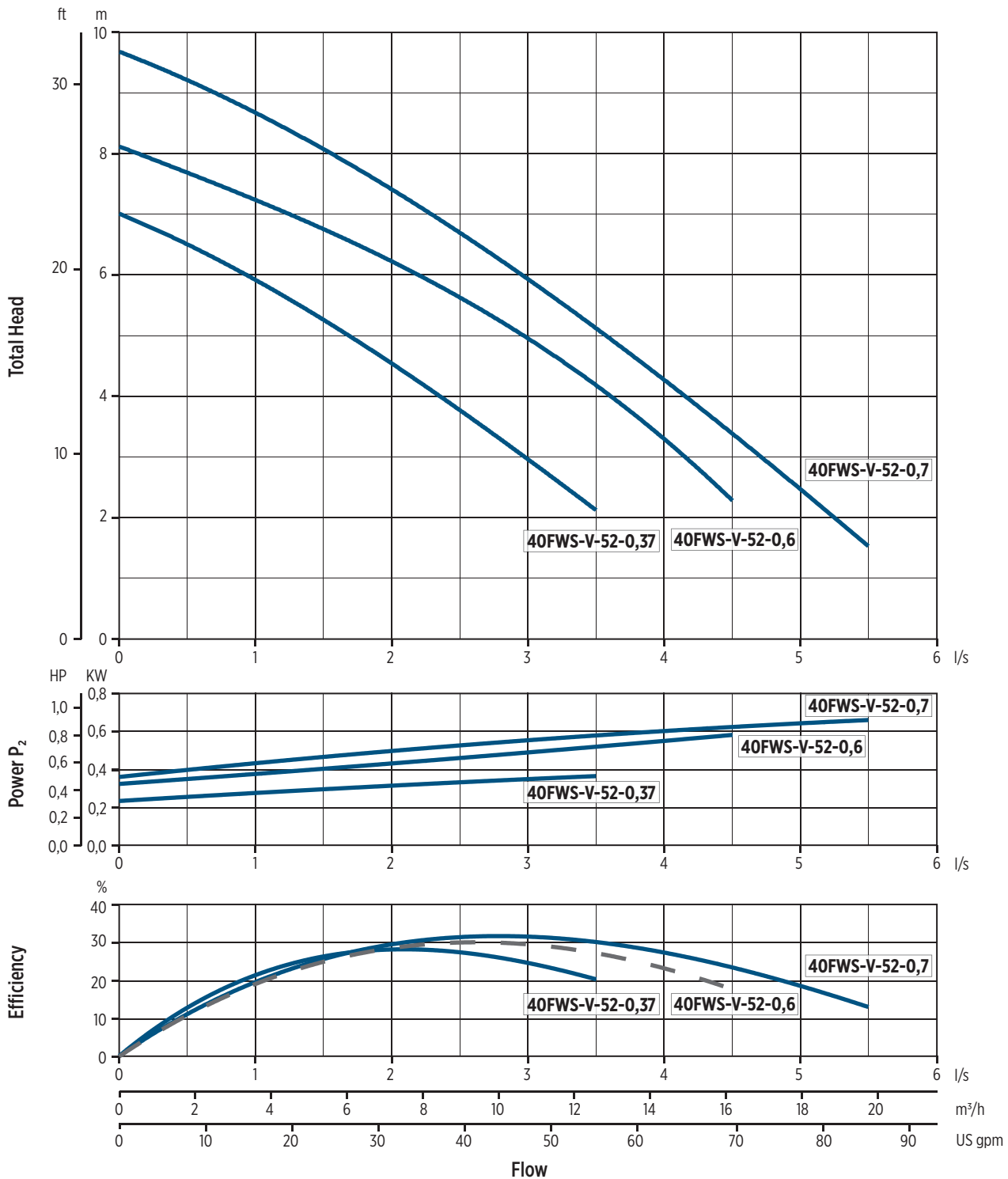
“-” = not available

“•” = available

HYDRAULIC PERFORMANCE AT 50 HZ

Pump model	Phase	Q = Delivery											
		l/sec 0	0,5	1	1,5	2	2,5	3	3,5	4	4,5	5	5,5
		m ³ /h 0	1,8	3,6	5,4	7,2	9	10,8	12,6	14,4	16,2	18	19,8
		US gpm 0	7,9	15,8	23,7	31,7	39,6	47,5	55,5	63,4	71,3	79,2	87,2
		H = Total meters head of water column [m]											
40FWS-V-52-0,37	1 ~	7	6,5	6	5,2	4,5	3,8	3	2,1				
40FWS-V-52-0,6	1 ~	8,1	7,8	7,1	6,8	6,2	5,7	5	4,1	3,3	2,3		
40FWS-V-52-0,7	1 ~	9,8	9	8,7	8,1	7,5	6,8	5,9	5	4,2	3,5	2,5	1,5
	3 ~	9,8	9	8,7	8,1	7,5	6,8	5,9	5	4,2	3,5	2,5	1,5

PERFORMANCE CURVES AT 50 HZ



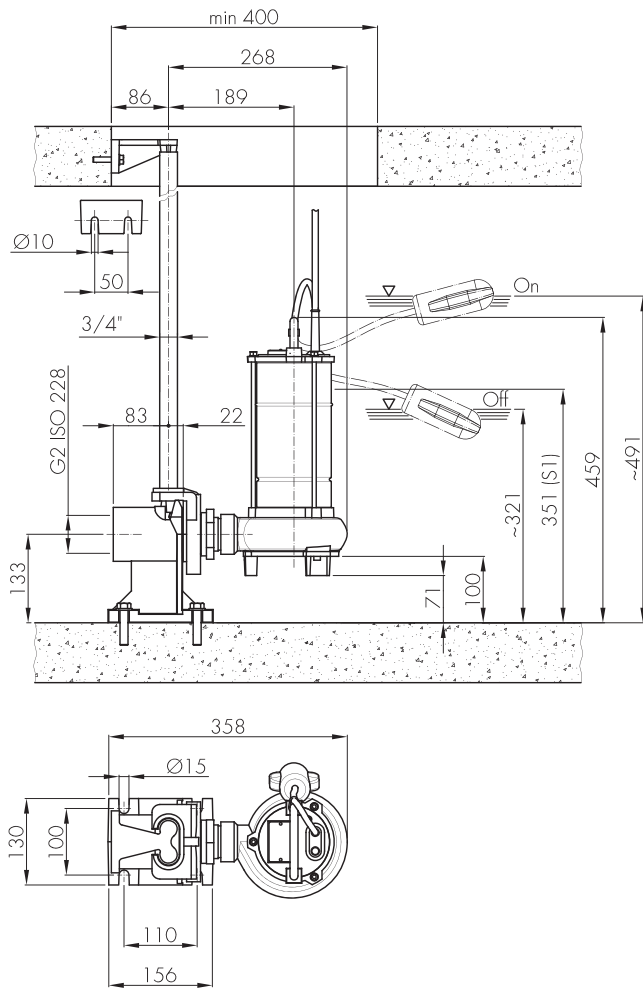
002009312/2022

INSTALLATION

INSTALLATION INSTRUCTIONS

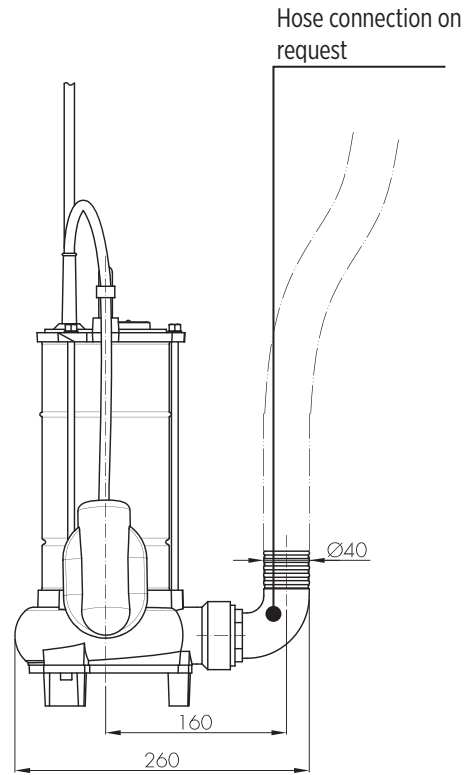
PERMANENT INSTALLATION WITH COUPLING SYSTEM

It is the recommended installation for the permanent pumping station. The electric pump is guided by two pipes and it is connected automatically to the coupling system. The quick connection ensures that the pump can be easily removed and re-installed.



TRANSPORTABLE INSTALLATION

Transportable as emergency pump with connection to the hose and for free installation in the well.



00130271/12/2022

50FWS V SERIES 50 HZ

FEATURES & BENEFITS

APPLICATIONS



Pumping of clear non-loaded fluids



Extraction of water from ponds, streams or pits and for rainwater collection



Wastewater

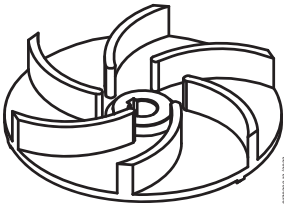


MARKETS



STAINLESS STEEL AND CAST IRON SUBMERSIBLE WASTEWATER LIFT PUMPS

Submersible electric pump particularly suitable for the emptying of basements, garages, cellars and flooded premises.



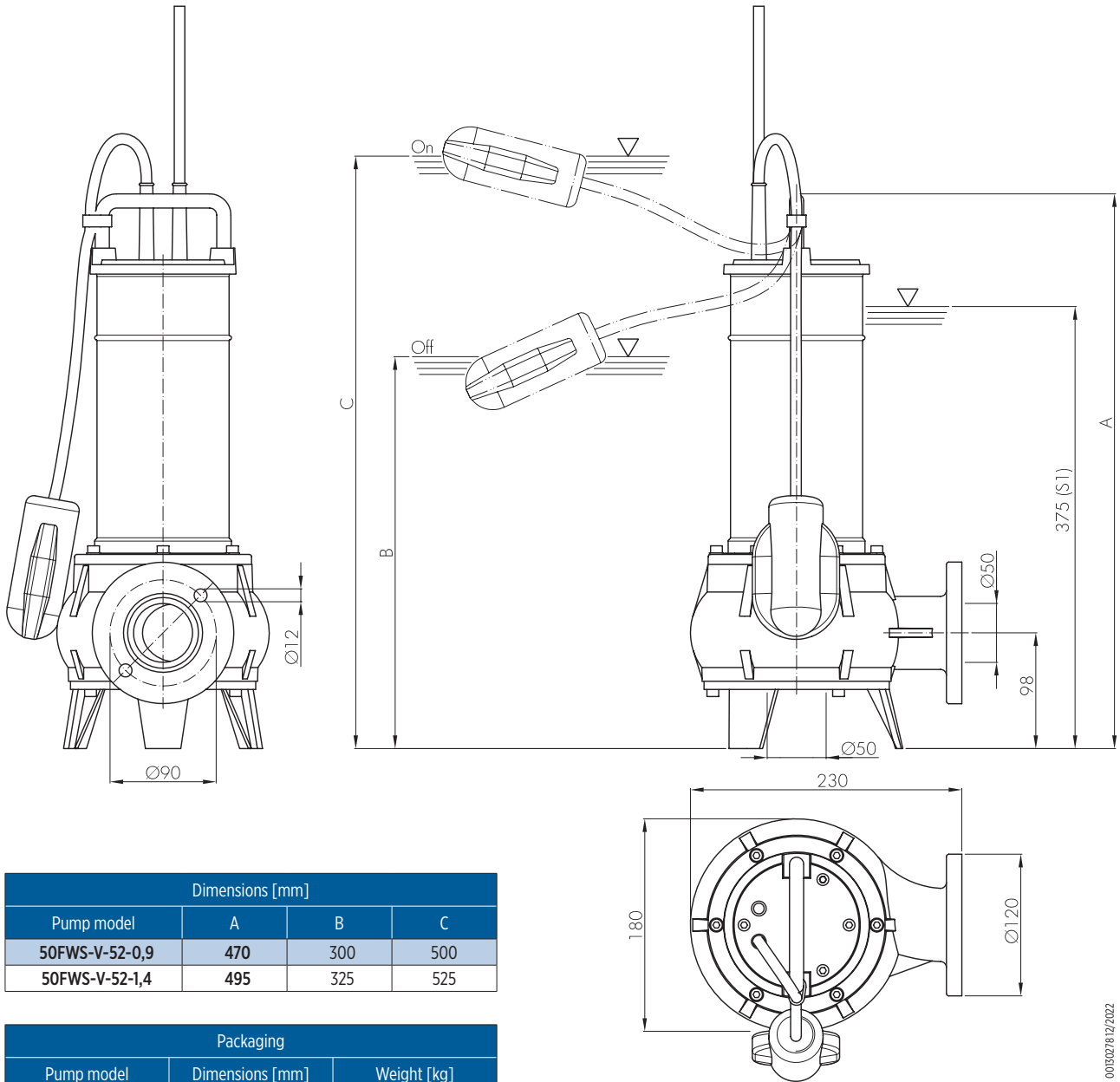
VORTEX IMPELLER

GENERAL FEATURES

		Materials/Constr.design
Vortex impeller		Cast iron EN GJL200
External casing		Stainless steel AISI304
Pump body		Cast iron EN GJL200
Cover		Cast iron EN GJL200
Mechanical seal	motor side	Seal ring
	pump side	Silicon carbide (SiC/SiC)
Motor shaft		Stainless steel AISI416
Power cable	Type	10 m H07RN-F type
	Single-phase	3G1 mm ² with SCHUKO plug (CEE 7/VII)
	Three-phase	4G1 mm ²
		Motor
Constr.design		asynchronous squirrel cage-type in dry chamber
Type		2 poles; 50 Hz
Insulation class		F
Protection degree		IP68
Voltage	Single-phase	230V ±6% built-in overheating protection, built in capacitor, float switch as optional
	Three-phase	230V ±10%, 400V ±10%
		Limits of use
Maximum liquid temperature		+40 °C
pH of pumped liquid		6 - 10
Liquid density		1,0 kg/dm ³
Maximum immersion depth:		5 m
Min. immersion depth for continuous service		375 mm
Free passage		50 mm
Max. number of starting/hour		20
		Construction options

- 60 Hz version
- Different voltages
- External capacitor with 4G1mm² cable

DIMENSIONAL DRAWINGS



0013027812/2022

Dimensions [mm]			
Pump model	A	B	C
50FWS-V-52-0,9	470	300	500
50FWS-V-52-1,4	495	325	525

Packaging		
Pump model	Dimensions [mm]	Weight [kg]
50FWS-V-52-0,9	255x205x560	18,7
50FWS-V-52-1,4	255x205x560	19,7

TECHNICAL DATA

Pump model	Motor absorbed power P ₁	Rated power P ₂		Voltage	Rated current	Phase	Power cable		float switch	Running capacitor	Delivery port	Weight [kg]
	[kW]	[kW]	[HP]	[V]	[A]		length [m]	Type		[μf]		
50FWS-V-52-0,9M	1,3	0,9	1,2	230	6	1 ~	10	3G1	-	20	G2	18
50FWS-V-52-0,9M-F	1,3	0,9	1,2	230	6	1 ~	10	3G1	-	20	Ø50	18
50FWS-V-52-0,9M-G	1,3	0,9	1,2	230	6	1 ~	10	3G1	•	20	G2	18
50FWS-V-52-0,9M-G-F	1,3	0,9	1,2	230	6	1 ~	10	3G1	•	20	Ø50	18
50FWS-V-52-0,9T	1,3	0,9	1,2	400	2	3 ~	10	4G1	-	-	G2	18
50FWS-V-52-0,9T-F	1,3	0,9	1,2	400	2	3 ~	10	4G1	-	-	Ø50	18
50FWS-V-52-0,9T-G	1,3	0,9	1,2	400	2	3 ~	10	4G1	•	-	G2	18
50FWS-V-52-0,9T-G-F	1,3	0,9	1,2	400	2	3 ~	10	4G1	•	-	Ø50	18
50FWS-V-52-1,4M	1,7	1,4	1,9	230	7,7	1 ~	10	3G1	-	25	G2	19
50FWS-V-52-1,4M-F	1,7	1,4	1,9	230	7,7	1 ~	10	3G1	-	25	Ø50	19
50FWS-V-52-1,4M-G	1,7	1,4	1,9	230	7,7	1 ~	10	3G1	•	25	G2	19
50FWS-V-52-1,4M-G-F	1,7	1,4	1,9	230	7,7	1 ~	10	3G1	•	25	Ø50	19
50FWS-V-52-1,4T	1,7	1,4	1,9	400	3,2	3 ~	10	4G1	-	-	G2	19
50FWS-V-52-1,4T-F	1,7	1,4	1,9	400	3,2	3 ~	10	4G1	-	-	Ø50	19

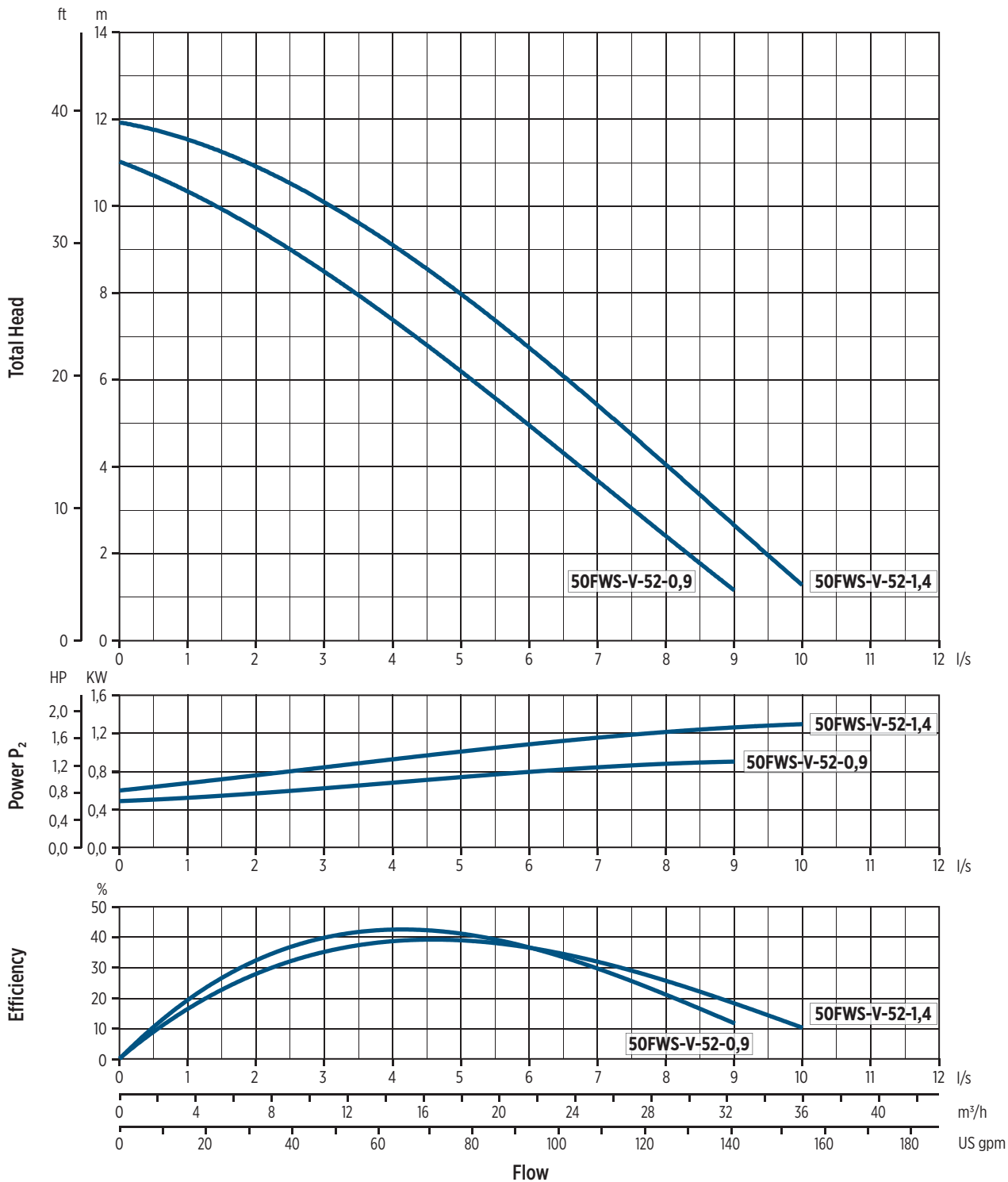
“-” = not available

“•” = available

HYDRAULIC PERFORMANCE AT 50 HZ

Pump model	Phase	Q = Delivery														
		l/sec 0	1	1,5	2	2,5	3	3,5	4	4,5	5	6	7	8	9	10
		m ³ /h 0	3,6	5,4	7,2	9	10,8	12,6	14,4	16,2	18	21,6	25,2	28,8	32,4	36
		US gpm 0	15,8	23,7	31,7	39,6	47,5	55,5	63,4	71,3	79,2	92,1	110,9	126,8	142,6	158,5
		H = Total meters head of water column [m]														
50FWS-V-52-0,9	1 ~	11	10,3	9,9	9,4	8,9	8,5	7,9	7,4	6,8	6,2	4,9	3,7	2,3	1,2	
	3 ~	11	10,3	9,9	9,4	8,9	8,5	7,9	7,4	6,8	6,2	4,9	3,7	2,3	1,2	
50FWS-V-52-1,4	1 ~	12	11,5	11,2	10,8	10,5	10,1	9,7	9,2	8,6	8	6,7	5,4	4	2,7	1,3
	3 ~	12	11,5	11,2	10,8	10,5	10,1	9,7	9,2	8,6	8	6,7	5,4	4	2,7	1,3

HYDRAULIC PERFORMANCE AT 50 HZ



0020094.12/2022

