

	Technical Data Sheet	Date: 2023-1-17	
	Jinmao Resilient Seated Gate Valve – ISO7259 EN1074-2	Version: A	Page: 1 / 7

1. Standard

Flanged, Ductile Iron Resilient Seated Gate Valve According to ISO 7259:1988

For T-key operation type A1

Flanges dimension and tolerances type 21 PN10/ 16 according to BS EN 1092-2:

The valve is suitable for use in potable water systems and buried service.

Available options:

I :Without accessory

II :Cap top operated

III: Handwheel operated

IV:Clockwise close & anti-clockwise close

Range :

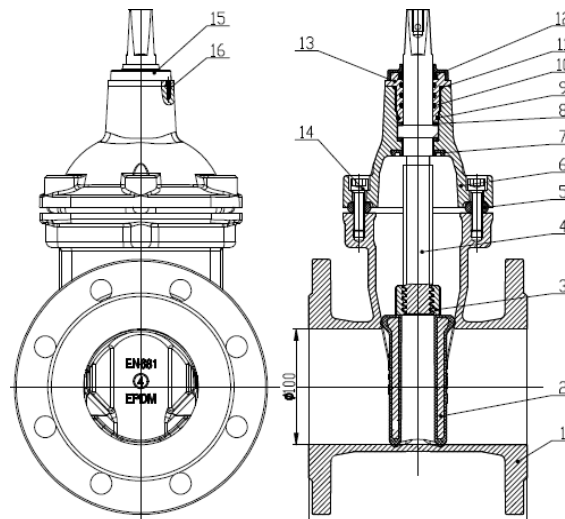
2. Main features



- Conception test according to Standard EN 1074-2:
 - MOT: 1 x DN
 - MsT: 2 x DN
 - Endurance test: 250 cycles
- Hydraulic pressure test:
 - Body: 1,5 PFA = 24 bar
 - Seat: 1,1 PFA = 17,6 bar
- Ductile iron construction provides high strength to weight ratio
- Excellent corrosion resistance due to:
 - Epoxy coating thickness min. 250 μ
 - Bolt holes filled with EVA glue
- Stem O'ring seal arrangement suitable for replacement under pressure
- Full clear bore for optimum flow
- Stem manufactured by cold forging process increases lifetime of the valve by excluding potential cracks
- Full compliant to EN 1074-2 & ISO 7259
- Maximum operating temperature: 50° C
- Standard flange drilling to ISO 7259 and DIN 3202 S14 & S15

3. Material and coating

	Technical Data Sheet	Date: 2023-1-17	
	Jinmao Resilient Seated Gate Valve – ISO7259 EN1074-2	Version: A	Page: 2 / 7



1	Body	Ductile iron ENGJS 500-7 EN1563
2	Wedge	Ductile iron (BS EN1563:1997 EN-GJS-500-7) + EPDM with WRAS certificate (BS EN681-1:1999 WA&WC) IHRD 75
3	Stem nut	Brass CuZn40Pb2 (CW617N) EN 12164
4	Stem	AISI 420 (2Cr13)
5	Gasket	EPDM with WRAS certificate (BS EN681-1:1999 WA&WC) IHRD 75
6	Bonnet	Ductile iron ENGJS 500-7 EN1563
7	Bonnet seal	EPDM with WRAS certificate (BS EN681-1:1999 WA&WC) IHRD 70
8	Stem space	PTFE
9	O ring II	EPDM with WRAS certificate (BS EN681-1:1999 WA&WC) IHRD 70
10	O ring III	EPDM with WRAS certificate (BS EN681-1:1999 WA&WC) IHRD 70
11	O ring I	EPDM with WRAS certificate (BS EN681-1:1999 WA&WC) IHRD 70
12	Dust proof ring	EPDM with WRAS certificate (BS EN681-1:1999 WA&WC) IHRD 70
13	Bush	Brass CuZn40Pb2 (CW617N) EN 12164
14	Bolt	AISI 304
15	Bush cover	EPDM
16	Screw	AISI 304
	Coating	Jinmao brand power with WRAS ,color RAL 5015 EN14901 (Average thickness $\geq 250 \mu$)

	Technical Data Sheet	Date: 2023-1-17	
	Jinmao Resilient Seated Gate Valve – ISO7259 EN1074-2 Supplier Jinmao	Version: A	Page: 3 / 7

4. Special focus

3.1 Face to face length and tolerances: ISO5752 series 14 and series15 (Equal to DIN3202 F4 and F5)

F4 or F5 show in order description.

3.2 Close direction:

Clockwise closing (CC)

3.3 Cap top and Hand wheel

According to order description, pack the bolt and washer when need extra cap top and hand wheel. Cap top or hand wheel show in order description.

3.4 Stem with single thread trapezoidal.

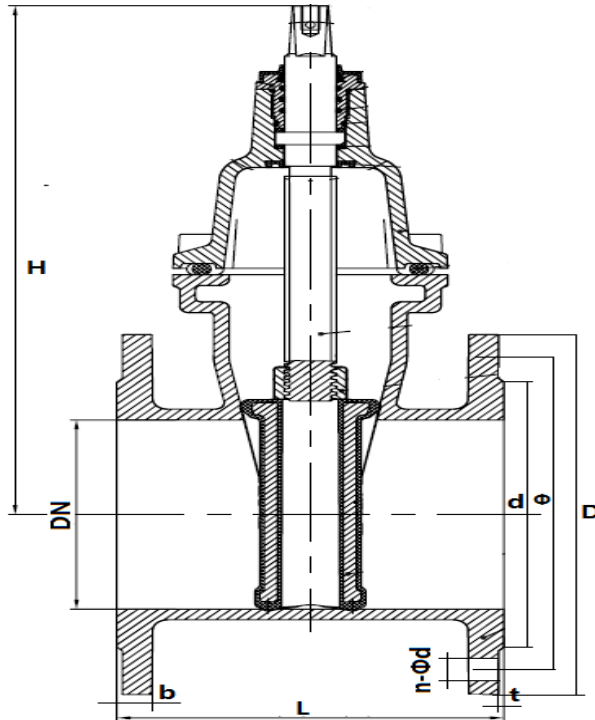
5. Production test (100%)

Test according to ISO 5208

DN	Shell test		Seat tightness test	
	pressure	duration (s)	pressure	duration (s)
up to DN50	1.5PN	15	1.1PN	15
DN65-150		60		60
DN200-300		120		120

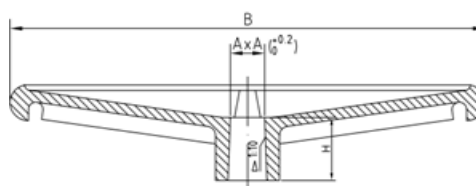
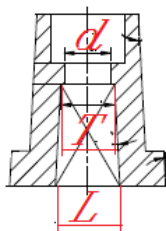
	Technical Data Sheet	Date: 2023-1-17	
	Jinmao Resilient Seated Gate Valve – ISO7259 EN1074-2	Version: A	Page: 4 / 7

8. Key dimension



		Technical Data Sheet				Date: 2023-1-17			
		Jinmao Resilient Seated Gate Valve – ISO7259 EN1074-2				Version: A		Page: 5 / 7	

Key dimension, weight and turns - Flanged valve														
DN	L mm		PN	n- Φ d mm	d mm	Φ mm	D mm	t mm	b mm	H mm	Weight		Turns	
	F4	F5									F4 / Kg	F5 / Kg	Double thread	Single thread
40	140	240	10 16	4- Φ 19	84	110	150	3	19	200	9.4	10.5	5.5	13.5
50	150	250	10 16	4- Φ 19	99	125	165	3	19	223	9.8	10.9	6.5	14.5
60/65	170	270	10 16	4- Φ 19	112	135/145	185	3	19	255	11.2	12.6	7	15.5
80	180	280	10 16	8- Φ 19	132	160	200	3	19	277	13.2	14.8	8.5	17
100	190	300	10 16	8- Φ 19	156	180	220	3	19	325	17.7	19.7	10.5	22
125	200	325	10 16	8- Φ 19	184	210	250	3	19	368	25.2	30.2	13	26
150	210	350	10 16	8- Φ 23	210	240	285	3	19	403	31.1	32.5	15.5	32
200	230	400	10 16	8- Φ 23 12- Φ 23	266	295	340	3	20	495	54.1	62.3	17	35
250	250	450	10 16	12- Φ 23 12- Φ 28	319	350 355	400	3	22	588	75.2	89.3	21.5	43
300	270	500	10 16	12- Φ 23 12- Φ 28	370	400 410	460	4	24.5	677	109	129	25.5	52



Key dimension - Cap top and Hand wheel					
DN	Cap Top			Hand Wheel	
	Φ d	T	L	A x A	B
40	9	14.3	17	14.3x14.3	180
50	9	14.3	17	14.3x14.3	180

	Technical Data Sheet			Date: 2023-1-17	
	Jinmao Resilient Seated Gate Valve – ISO7259 EN1074-2			Version: A	Page: 6 / 7

60/65	11	17.3	20	17.3x17.3	220
80	11	17.3	20	17.3x17.3	220
100	11	19.3	22	19.3x19.3	250
125	11	19.3	22	19.3x19.3	250
150	11	19.3	22	19.3x19.3	250
200	14	24.3	27	24.3x24.3	300
250	14	27.3	30	27.3x27.3	350
300	14	27.3	30	27.3x27.3	350

9. Packaging

All valves shall be separated packaged in plastic bag, and packaged in plywood box. The wall thickness is 12mm, and the box leg height is 100mm. bind the box with plastic belt, at least 1 round at height frame, 2 rounds at width frame, 2 rounds at length frame. See the below photo.

Packing Specification for RES Valve - ISO7259 F4 RESILIENT GATE VALVE

DN	Qty. per Box	Size of Box (mm)			weight (KG) per valve	Net weight kg	weight includig box (KG)	20GP (Boxes)	20GP (pcs)
DN40	130	1100	1100	1100	9.4	1222	1252	16	2080
DN50	120	1100	1100	1100	9.8	1176	1206	16	1920
DN65	60	1100	1100	820	11.2	672	702	20	1200
DN80	50	1100	1100	930	13.2	660	690	20	1000
DN100	50	1100	1100	1100	17.7	885	915	20	1000
DN125	40	1100	1100	1200	25.2	1008	1038	10	400
DN150	16	1100	1100	730	31.1	497.6	528	20	320
DN200	12	1100	1100	820	54.1	649.2	679	20	240
DN250	10	1100	1100	1100	75.2	752	782	20	200
DN300	8	1100	1100	1100	109	872	902	20	160

Packing Specification for RES Valve - ISO7259 F5 RESILIENT GATE VALVE

	Technical Data Sheet		Date: 2023-1-17	
	Jinmao Resilient Seated Gate Valve – ISO7259 EN1074-2		Version: A	Page: 7 / 7

Nominal Size of Valve	Quantity per Box	Size of Box (mm)			weight (KG) per valve	Net weight kg	weight includig box (KG)
DN40	86	1100	1100	1100	10.5	903	933
DN50	80	1100	1100	1100	10.9	872	902
DN65	46	1100	1100	840	12.6	579.6	610
DN80	40	1180	1100	920	14.8	592	622
DN100	32	1180	1100	1100	19.7	630.4	660
DN125	24	1100	1100	1200	30.2	724.8	755
DN150	12	1200	1100	720	32.5	390	420
DN200	9	1300	1100	820	62.3	560.7	591
DN250	6	1280	980	920	89.3	535.8	566
DN300	4	1070	970	1100	129	516	546

20GP(Boxes)	20GP(pcs)
20	1720
20	1600
20	920
20	800
20	640
10	240
30	360
16	144
20	120
20	80