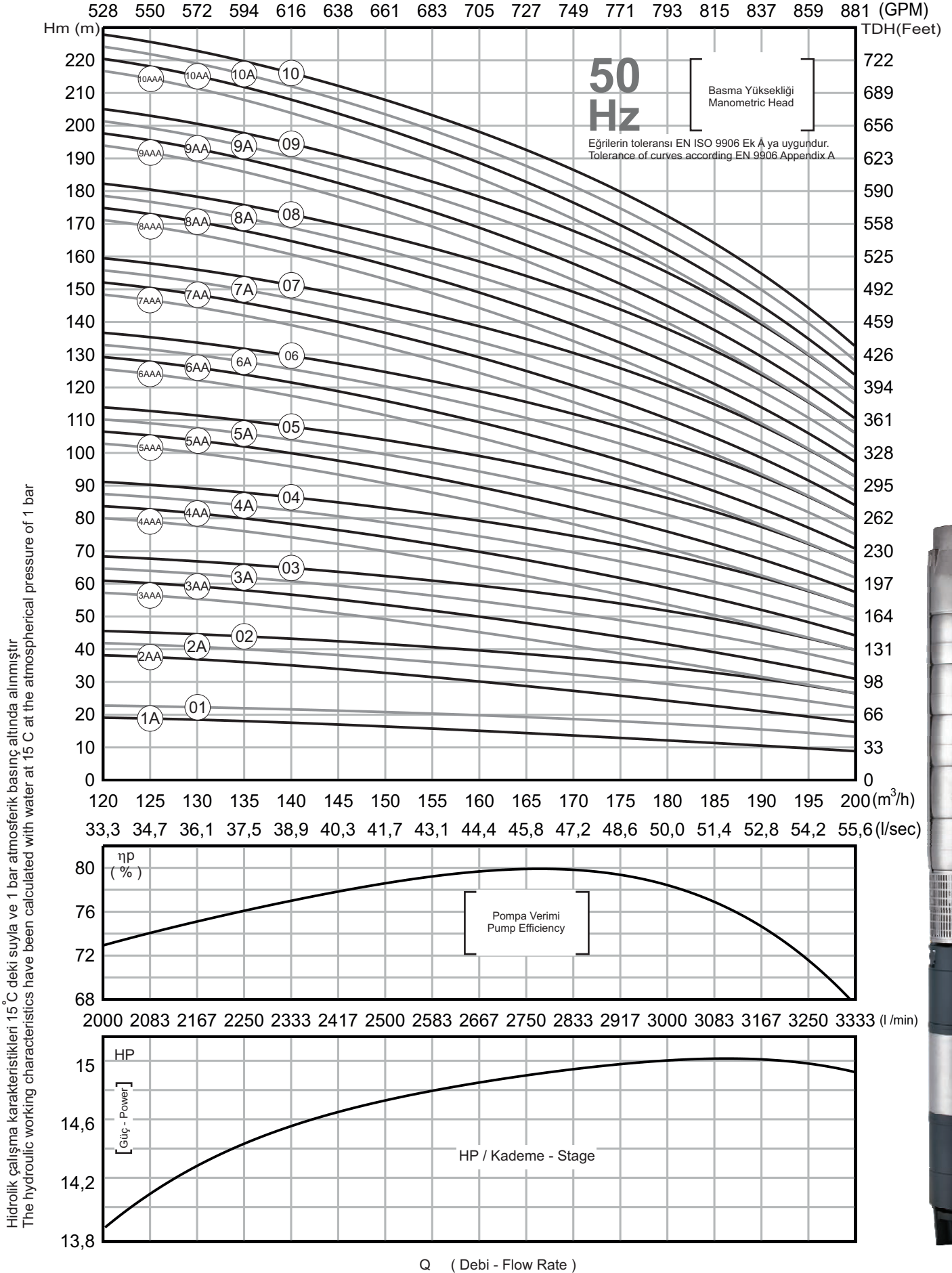




## Performans eğrileri Performance Curves 1 – 10



Performans eğrileri kinematik viskozite  $\nu = 1 \text{ mm}^2/\text{s}$  ve yoğunluk  $\rho = 1000 \text{ kg / m}^3$  temel alınarak oluşturulmuştur  
Performance curves are based on the kinematic viscosity  $\nu = 1 \text{ mm}^2/\text{s}$  and density  $\rho = 1000 \text{ kg / m}^3$